



Overview

G01 – Compression platens (Druckplatten)

				
TH23	THS233k	TH233k	TH36	TH36T
				
THS42	THS42	TH141	THS347	THS402
				
THS523	THS747	THS757	TH23-56-Af40	

G02 – Bending grips (Biegevorrichtungen)

				
TH238	TH238X	TH238XW	TH103	TH103X
				
TH103-TK	TH22	TH22	TH22	TH22
				
TH165	THS41	THS794	THS260	THS124
				

THS580 THS651 THS771 THS139 THS543
G03 – Shear grips (Abschervorrichtungen)



TH17



TH193



THS600



THS740



THS799



THS818

G04 – Eccentric roller (exzentrische Rollenspannzeuge)



TH7



TH7



TH7



THS766

G05 – Pincer grips (Scherenspannzeuge)



THS341



THS470



THS205k



THS501



TH230



TH11-5



TH11-20

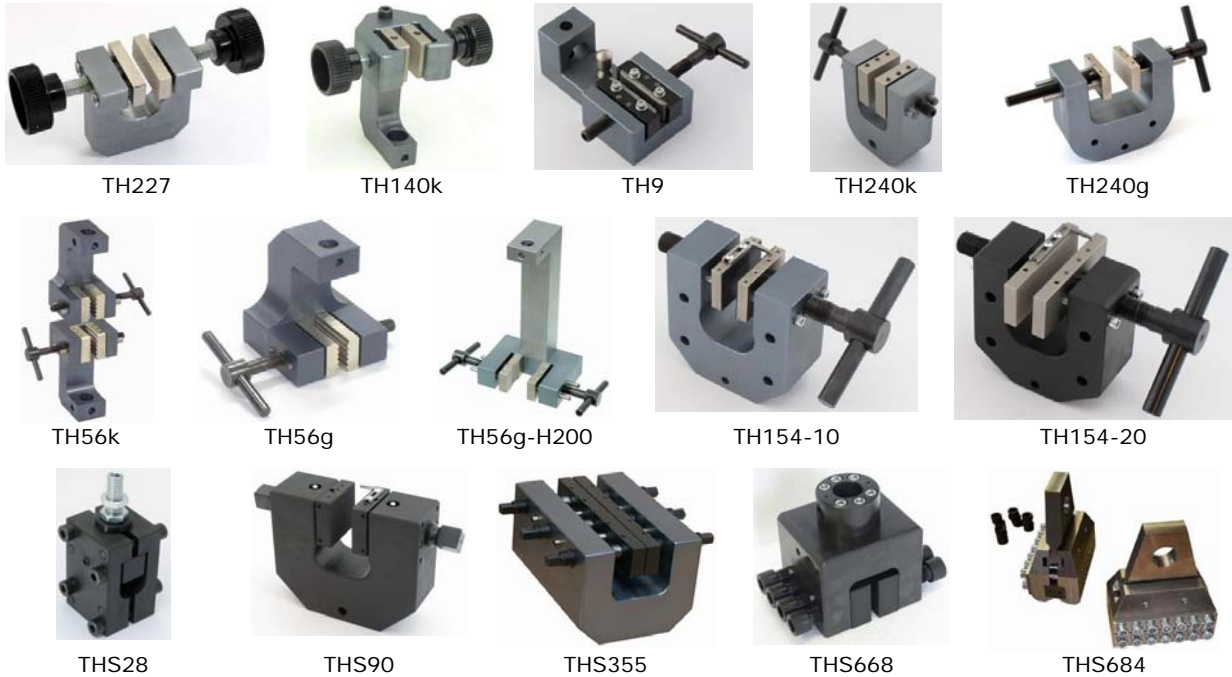


TH11-50



TH124

G06 – Vice grips (Schraubspannköpfe)



G07 – Ribbon grips (Bänderspannzeuge)



G08 – Wedge grips (Keilspannzeuge)



G08 – Wedge grips (Keilspannzeuge)



THS321



THS427



TH185

G09 – Button head grips (Schulterprobenspannzeuge)



TH89



THS314



TH4



TH16



THS43



THS325



THS353



THS474



THS565



THS765

G10 – Thread head grips (Gewindeprobenspannzeuge)



TH179



TH179

G11 – Rope grips (Seilspannzeuge)



TH76



TH76



TH76



TH76



THS13x



TH9



TH9



THS185



TH170



TH170-250-Ko



THS95



THS255

G12 – Pneumatic grips (pneumatische Spannzeuge)



TH140k



THS501



TH94



TH229



TH56k



TH56k



TH240k



TH240k



TH56g



TH56g



TH56g-H200



TH240g



TH108



TH240g



TH149



THS22



TH175-10



TH175-20



TH175-100



TH83



TH232



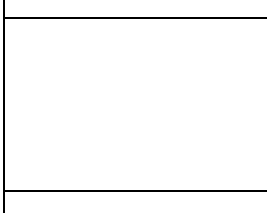
TH232-2Ko



THS65



TH126



TH205



TH216

G13 – Hydraulic grips (hydraulische Spannzeuge)

				
TH135-60	THS135-2Ko	TH135-180	TH186-1000	THS137
				
THS508	THS4	THS82		THS480
				
			TH135	TH135

G14 – Peeling grips (Abzugsvorrichtungen)



G15 – Compression cages (Zugkäfige)



G16 – conform to DIN, ASTM (Vorrichtungen nach DIN)



TH44



TH62



THS174



THS174



THS174

G16 – conform to DIN, ASTM (Vorrichtungen nach DIN)



TH113



THS145



THS453



THS525



THS815



THS525



THS145

G17 – Adapters (Adapter Absteckstifte)



TH187



TH187



THS220



THS637



THS438



THS464



THS486



THS626



THS628



THS646



THS531



THS231



THS521



THS481



THS658



TH3



THS327



THS317



THS91



THS572



TH239

G18 – Special Accessories (spezielle Vorrichtungen für Materialprüfer)



TH24



TH24



TH2570

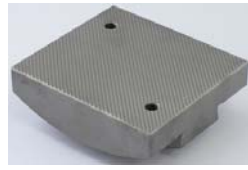


TH171

G19 - Special jaws (Sonderbacken und Ersatzteile für alte Spannköpfe)



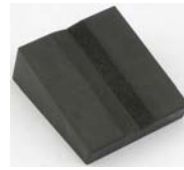
THS714



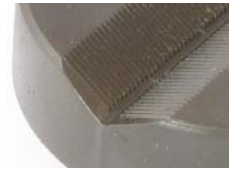
THS787



THS758



THS769



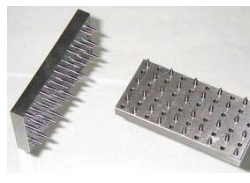
THS724



THS787



THS768



THS22

G21 – Temperature chambers (Temperaturkammern)



TH2700



TH2700



TH2700



TH2700



TK45



TK21



TK56

G22



THS472g



THS472k



THS472



THS493